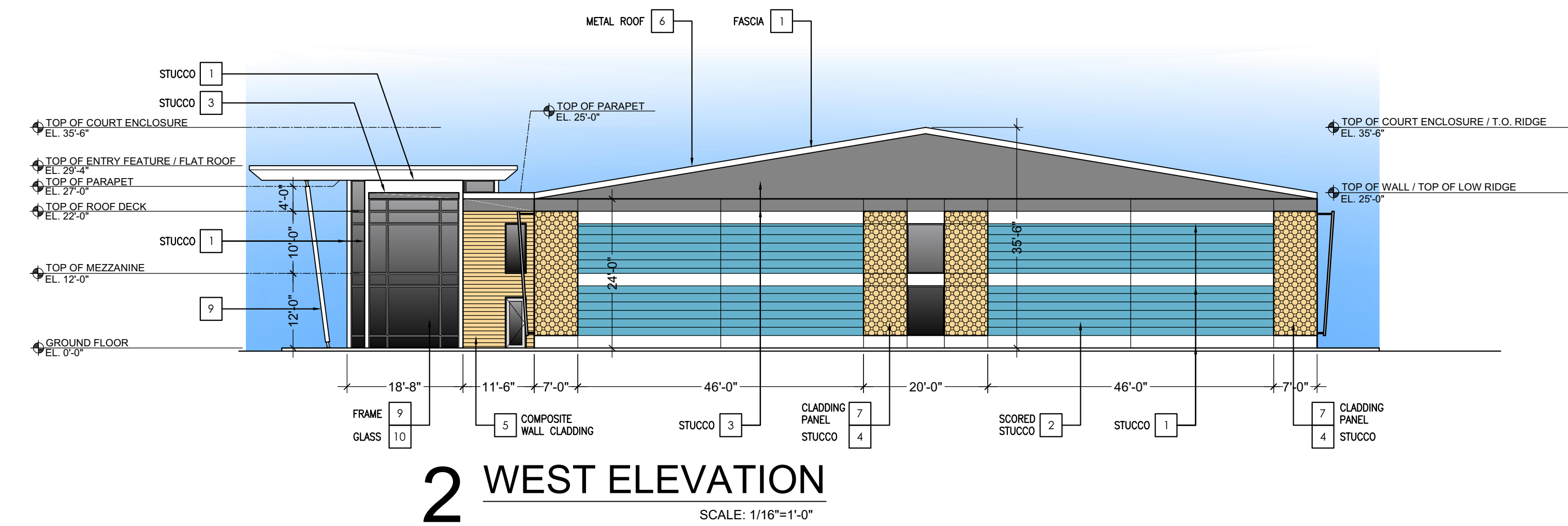
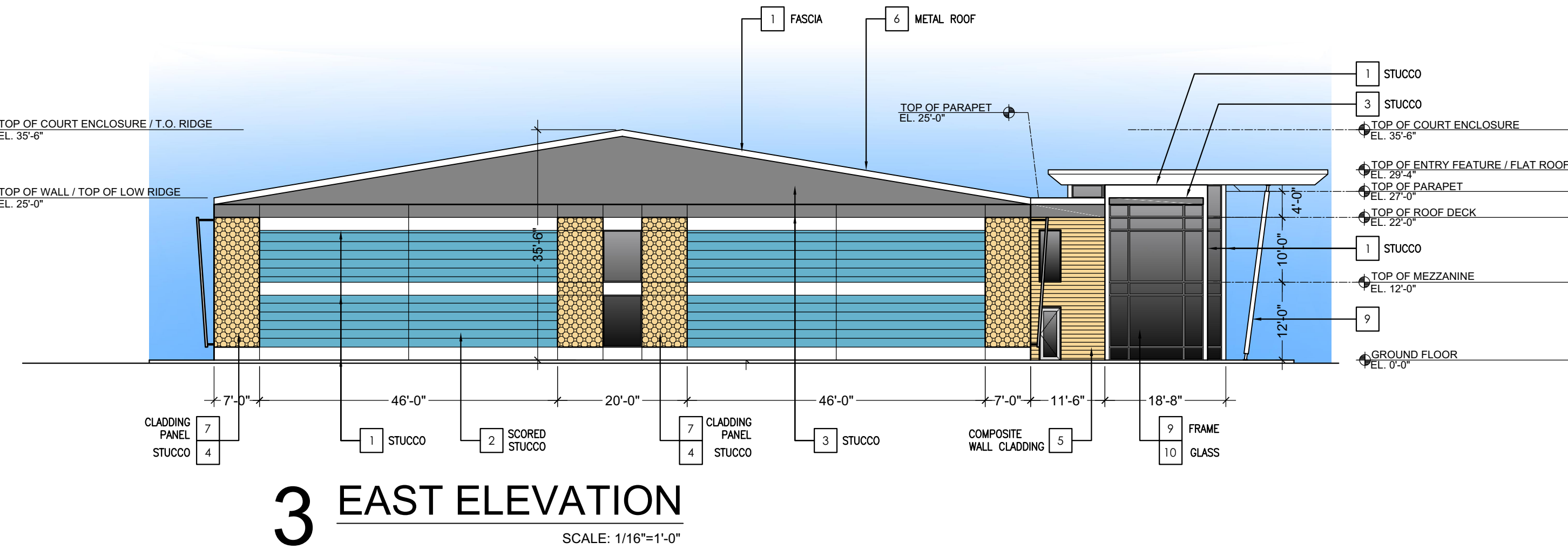


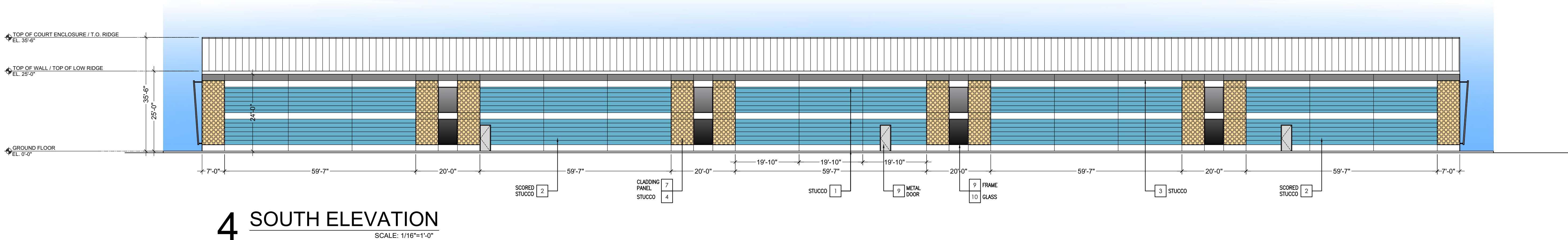
1 NORTH ELEVATION
SCALE: 1/16"=1'-0"



2 WEST ELEVATION
SCALE: 1/16"=1'-0"



3 EAST ELEVATION
SCALE: 1/16"=1'-0"

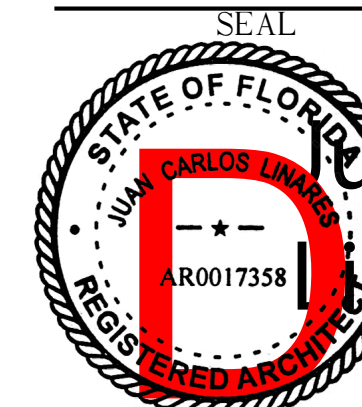


4 SOUTH ELEVATION
SCALE: 1/16"=1'-0"

COLOR CHART	1	2	3	4	5	6	7	8	9	10
	BM OC-152 SUPER WHITE COLOR	BM 775 POOLSIDE COLOR	BM HC-154 HALE NAVY COLOR	BM 173 HAPPILY EVER AFTER COLOR	COMPOSITE WALL CLADDING NATURAL OAK	ANODIZED STANDING SEAM METAL ROOF, SILVER COLOR	PRE MANUFACT. ALUMINUM EXTERIOR WALL CLADDING PANEL	ALUMINUM WHITE POWDER COAT	ALUMINUM MILL FINISH	GLASS CLEAR
		PMS 638		PMS 128	PMS 143					



PMS 143 - F1B434 - PANTONE PMS 143 C - Leaves
PMS 128 - F3D54E - PANTONE PMS 128 C - Outer Circle and Center Fill
PMS 638 - 00AFD7 - PANTONE PMS 638 C - Inner Blue Green Circle
PMS 141 - F2CA61 - PANTONE PMS 141 C - Text



JUAN C. LINARES
Digitally signed
by Juan C.
Lin
Date: 2023.08.23
11:45:44 -0500

PZ23-12000009
10/04/2023

REVISIONS

-
-
-
-
-
-
-
-
-
-

ALL IDEAS, DESIGN, ARRANGEMENTS, AND PLANS INDICATED OR REPRESENTED BY THIS DRAWING ARE OWNED BY AND PROPERTY OF THE OFFICE, AND WHERE CREATED, FORWARDED, AND DEVELOPED FOR USE ON, AND IN CONNECTION WITH THE SPECIFIED PROJECT. NONE OF SUCH IDEAS, DESIGN, ARRANGEMENTS, AND PLANS SHALL BE USED BY OR DECIDED BY ANY PERSON, FIRM, OR CORPORATION FOR ANY PURPOSE WITHOUT WRITTEN PERMISSION OF RWB LINARES ARCHITECTURE, INC.

FLORIDA INDOOR TENNIS
POMPAHO BEACH, FL 33069

1600 SOUTH DIXIE HWY., SUITE 400
BOCA RATON, FLORIDA 33432
PHONE 561-391-0081 FAX 561-391-0085
EMAIL mail@rwb-arch.com

RWB
Lin
ARCHITECTURE

PROJECT # 21-035
DATE PER ISSUANCE
SHEET #

A3.01